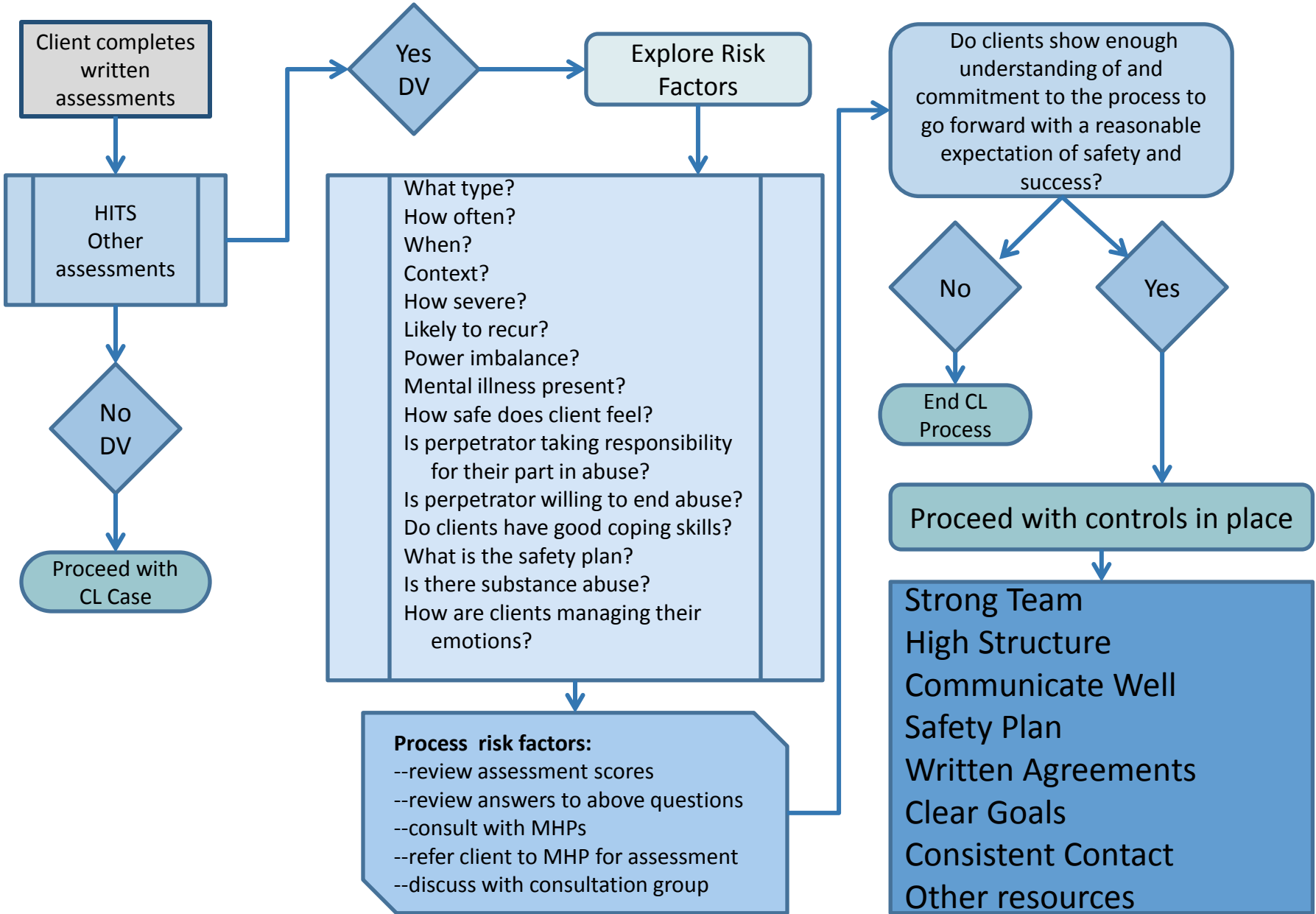


How to Screen for Domestic Violence



Client completes written assessments

HITS
Other assessments

No DV

Proceed with CL Case

What type?
How often?
When?
Context?
How severe?
Likely to recur?
Power imbalance?
Mental illness present?
How safe does client feel?
Is perpetrator taking responsibility for their part in abuse?
Is perpetrator willing to end abuse?
Do clients have good coping skills?
What is the safety plan?
Is there substance abuse?
How are clients managing their emotions?

Process risk factors:
--review assessment scores
--review answers to above questions
--consult with MHPs
--refer client to MHP for assessment
--discuss with consultation group

Explore Risk Factors

Do clients show enough understanding of and commitment to the process to go forward with a reasonable expectation of safety and success?

No

End CL Process

Yes

Proceed with controls in place

Strong Team
High Structure
Communicate Well
Safety Plan
Written Agreements
Clear Goals
Consistent Contact
Other resources